

# VILLIERS FURNITURE

**Name** OBELISK SUN DIAL

**Category** SCULPTURE

## **Description**

Obelisks were used as sundials by ancient Egyptians as early as 3500 BCE. The Egyptians were one of the first cultures to divide the day into equal parts and track time. Obelisks are tall, four-sided monuments that taper to a pyramid at the top. The shadows cast by the moving obelisk indicated the time of day, allowing people to divide the day into morning and afternoon. This new incarnation, designed and made in 2024 is made from 316 Stainless Steel. 2.5 M Tall. Finish Mirror polished .

## OBELISK . SPECIFICATION

Manufactured From

316 Stainless steel

Obelisk (Sun Dial )

Overall Dimensions

2480 mm H 580 Wide x 590 deep

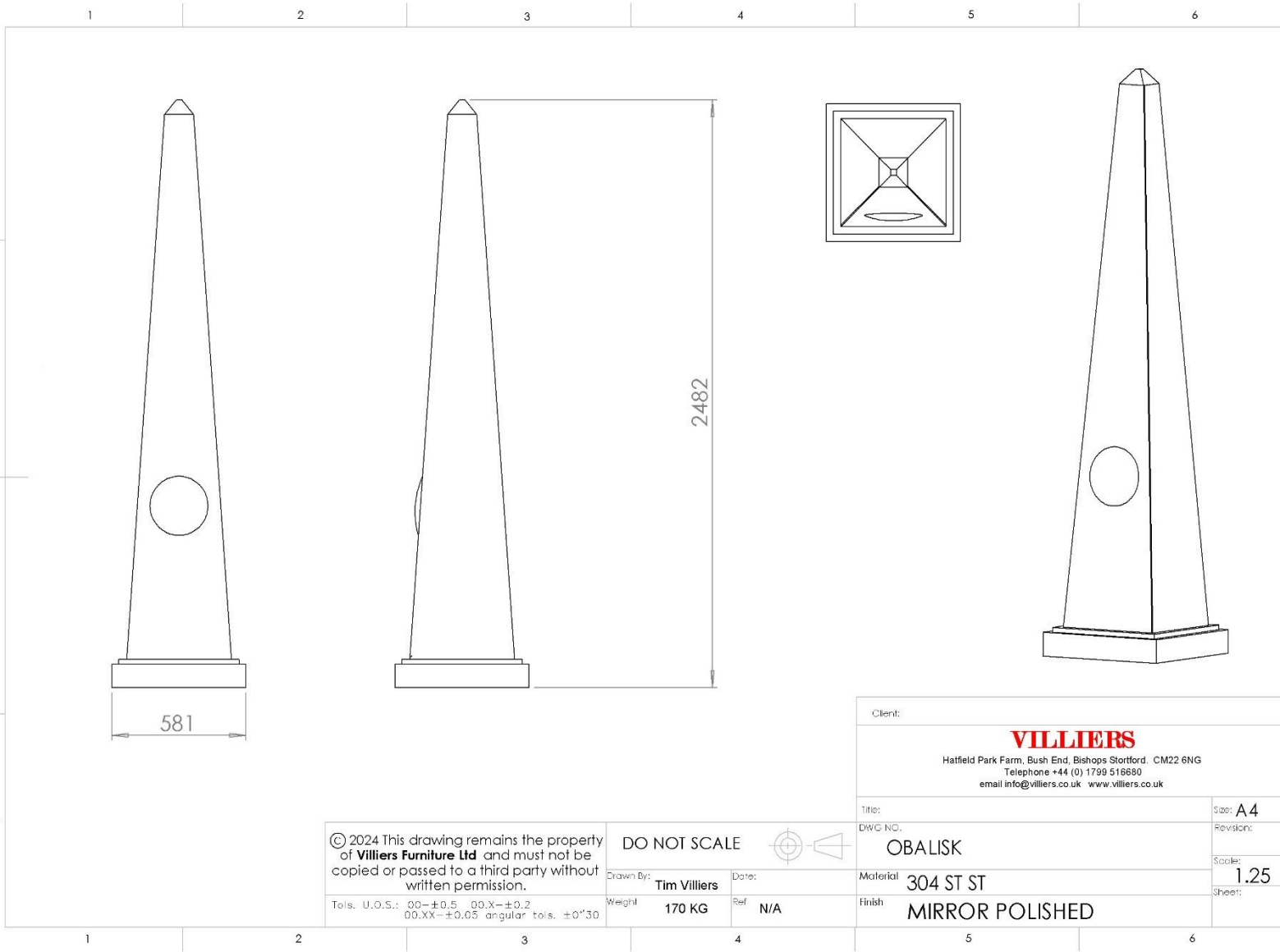
CONSTRUCTED FROM

5 mm thick 304 Stainless steel and Hollow  
Box section plinth

Finish Mirror Polished

Weight = 170 KG

Custom sizes and finishes Please contact us  
with your requirements .



© 2024 This drawing remains the property of **Villiers Furniture Ltd** and must not be copied or passed to a third party without written permission.

Tols. U.O.S.: 00-±0.5 00.X-±0.2  
00.XX-±0.05 angular tols. ±0°30

DO NOT SCALE



Drawn By: **Tim Villiers** Date:   
Weight: **170 KG** Ref: **N/A**

Client:		
<b>VILLIERS</b> Hatfield Park Farm, Bush End, Bishops Stortford. CM22 6NG Telephone +44 (0) 1799 516680 email info@villiers.co.uk www.villiers.co.uk		
Title:	Size: <b>A4</b>	
DWG NO.	Revision:	
<b>OBALISK</b>		Scale: <b>1.25</b>
Material	<b>304 ST ST</b>	Sheet:
Finish	<b>MIRROR POLISHED</b>	



VILLIERS © OBALISK